

MITEL

## Navigator



### A revolutionary PC-integrated IP phone that maximizes desktop productivity.

Mitel® Navigator is a sleek, silver phone device that fits neatly under a flat screen monitor and connects to the user's PC. Utilizing the computer's monitor, Navigator replaces the smaller color screens found on other phones and saves desktop "real estate." With its tightly knit PC interface, Navigator works seamlessly with applications, such as the award-winning Mitel Your Assistant and environments like Microsoft® Office Communicator 2005, for enhanced communications functionality.

#### Feature Rich Phone

Navigator delivers all the features that users have come to expect from Mitel telephony solutions including a high-quality speaker phone, programmable keys, hold, call transfer, conference call, volume control, mute, redial, call forward, voice mail access and other must-have business functions. Its ergonomic design is highly intuitive to use and allows users to define their own functions via 24 programmable keys. These buttons can be used to launch PC applications, perform telephony functions or open documents or URLs. As a telephony endpoint, Navigator is "always on" and supports both the Session Initiation Protocol (SIP) and Mitel's own MiNET protocol.

#### Powerful PC Applications

Through the Navigator Task Bar, users can easily program context-sensitive phone keys and key groups. The interface also allows users to open documents, launch web sites and applications specific to their business, and program advanced telephony features, such as hot desking, conferencing, and others. Its high-quality speakers are used as the PC's audio. In addition to supporting telephony headsets, Navigator supports stereo headphones that can be used with the embedded, high-quality, full-duplex microphone and speakers for handsfree conference calling. When the PC plays music or other audio streams, Navigator uses a phone sensitive volume control in the event of an incoming or outgoing call.



it's about **YOU**

### Navigator Phone Features:

- Dual mode IP phone (MiNET, SIP)
- Handsfree Speakerphone operation (full duplex)
- Dual Port, 10/100 Mb switched Ethernet
- 2-line, 20-character white backlit “graphics” display with contrast control and auto dimming, for improved legibility
- Graphics display for future support of non-Latin (i.e. Asian, Cyrillic) characters
- 3 context-sensitive softkeys for feature-set customization
- 8 programmable multi-function keys with blue LED indicators
- 8 fixed-function keys: Hold, Superkey, Message, Speaker, Mute, Redial, Cancel, Transfer/Conference
- 3 of the fixed keys (Message, Mute, and Speaker) have visual LED indication of use
- Icon Button Labeling for Global Markets
- Ringer/Volume up/down controls
- Superkey programming for easy access to telephone system features
- Use the device to play music from the computer and have the music stop when a phone call is initiated or received.
- Blue Backlit Dial Pad that automatically dims when not in use, but is activated when phone is used
- Dedicated telephony headset jack
- Dedicated PC headset jack
- Programmable features: Auto Answer, Automatic Daylight Saving Adjustment, Hotline (Automatic Ring-down) Individual Phone Book, Received, Dialed and Missed Call Logs, Redial from Call Logs, Speed Dial Buttons, Time and Date (SNTP)
- Indicators Include: Voice Mail Access – large message waiting lamp with blue LEDs, Beep on Hold, Busy Lamp Field (BLF), Call Duration Timer, Call Progress Tone, Call Waiting, Dial Tone, Incoming Ringing (Distinctive Ringing), Upgrade Notify
- Call Control Features: 3-Way Conference Call, Caller ID, Call Hold (and Call Hold Ringback), Call Transfer to Another SIP phone, Call Waiting, Do Not Disturb, Emergency Services E911, In-Band and Out-Band DTMF, Multiple Call, On-Hook Dialing
- Hearing Aid Compatible Handset (Release 2 Handset)
- Automatic audio switching between PC audio and Phone audio
- Adjustable-height stand, designed to fit under most flat screen monitors
- 802.3af compliant
- Accepts standards based (IEEE 802.3af) power over the LAN via spare pair to signal pair, or supports 48 VDC Ethernet / AC Power wall adapter

- Compression support: G.711 uLaw and aLaw, G.729a, G.729ab (receive only)
- Supports IEEE 802.1p/q for Voice Quality of Service
- Dial by: Dialing Plan, IP Address, Number / Extension, SIP URL and Parameter, Call / Log / Phone Book / Web, Last Number, Speed Dial

### Navigator Task Bar Features:

The Navigator Task Bar is a PC Application that provides on-screen programming and labeling of the Navigator's programmable multi-function keys. Features include:

- Support for 22 programmable, self-labeling buttons in three key groups
- Launch PC applications from Navigator Task Bar or button on phone
- Open documents from Navigator Task Bar or button on phone
- Launch URLs from Navigator Task Bar or button on phone
- Program and label telephony features
- HTML / CSTA API Toolkit available for applications development

### Multi-Language Support

- Supported languages for SIP: English, Dutch, French, German and Spanish

### Dual Mode

Supports both SIP and Mitel IP (MiNET) protocols

### Dual Port

10/100 Mb switched Ethernet

### Compression Support

G.711, G.729

### Voice QoS

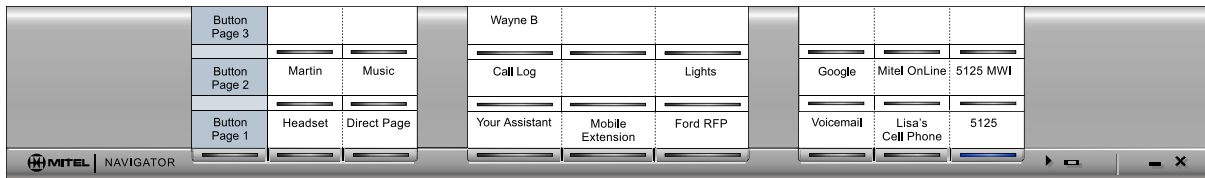
Supports IEEE 802.1p/q for Quality of Service

### Powering Options

Accepts standards-based (IEEE 802.3af) power over the LAN via spare pair or signal pair, or supports 48 VDC Ethernet/AC Power wall adapter

### Environmental Conditions

	Temperature	Humidity
Operational	+4°C – +40°C	34%
Storage	-25°C – +66°C	15%



Navigator Task Bar Application Expanded View

**Protocol Support**

SIP	SIP Compliant with Call Extensions RFC3261 (2002), RFC2543 (1999) RFC2327, RFC3264 RFC2617, RFC1889 RFC3891, RFC2782 draft-ietf-sip-cc-transfer-04 RFC3842 (MWI) RFC3515 (REFER) RFC3262 (PRACK) RFC3311 (UPDATE) RFC4028 (Session Timer)
MiNET	Mitel Proprietary Protocol

**Protocol Support**

Other	RFC3489 (STUN) Adaptive Jitter Compensation ARP (Address Resolution Protocol) DHCP (Dynamic Host Configuration Protocol) DNS (Domain Name Server) Echo Suppression CSTA Interface (ECMATR/87) ICMP (Internet Control Message Protocol) IP Version 4 IP Version 4ToS PPPoE (Point-to-Point Protocol Over Ethernet) Q.23 DTMF (Dual Tone Multi-Frequency) RFC2616 (Hyper Text Transfer Protocol – HTTP) RFC854 (Telnet) RTP (Real-Time Protocol) Secure RTP (Mitel to Mitel Phone) SNMP (Simple Network Management Protocol) SRTP and AES (Encrypted Audio) Static IP Symmetric UDP TCP (Transport Control Protocol) TFTP (Trivial File Transfer Protocol) UDP (User Data Protocol) 802.1 p/Q SNTP (Simple Network Time Protocol) Out of Band DTMF Call Control API (Telnet)
Tones	North American, UK, Australia, New Zealand, France, Germany, Netherlands, Mexico

**Regulatory Standards**

**EMC** CANADA:  
ICES-003 Issue 3

USA:  
CFR Title 47, Part 15 (CLASS B)

EU:  
R&TTE directive (1999/5/EC)  
EN55024:1998  
EN55022:1998

**Safety** CANADA:  
CAN/CSA-C22.2 No. 60950-00

USA:  
UL60950  
ANSI/NFPA 70

EU:  
R&TTE directive (1999/5/EC)  
EN60950: 2000

**Navigator Specifications**

Port	AC Adapter	PROCESSOR			DSPs		Silicon
		Power Consumption	Type	Speed	DSPs	Speed	
2	Input: 110V 50-60 Hz or 220V 50 Hz  Output: 24VDC 1.7A / 48VDC LAN Power	8.0 W	ARM946E - S	140 MHz	1	74 Mhz	0.18 μ CMOS

RAM	ROM	Voice Traffic	Signaling	Voice QoS	Size (LxWxH)	Weight	CODEC/Compression	MTBF Rate:
16 MBytes	4 MBytes	RTP over UDP	MiNET over TCP Session Initiation Protocol (SIP)	IEEE 802.1p/q	Phone Bar: 14.5" x 4.5" x 3.25" * Handset & Cradle: 2.5" x 5" x 5" (*The Navigator Phone is adjustable in height from 3.25 up to 4.25 inches.)	1.5 lbs	G.711, G.729	10 Years

[www.mitel.com](http://www.mitel.com)



<b>North America</b> Tel: (613) 592 2122 Fax: 1 800 648 3579	<b>Latin America</b> Tel: (613) 592 2122 Fax: 1 800 648 3579	<b>UK</b> Tel: +44 (0)1291 430000 Fax: +44 (0)1291 430400	<b>France</b> Tel: +33 (0)1 61 37 00 90 Fax: +33 (0)1 61 37 00 99
<b>Benelux</b> Tel: +31 (0)30 85 00 030 Fax: +31 (0)30 85 00 031	<b>Italy</b> Tel: +39 02 2130231 Fax: +39 02 21302333	<b>Germany, Switzerland, Austria</b> Tel: +49 (0)211 5206480 Fax: +49 (0)211 52064899	<b>Portugal and Spain</b> Tel: +34 91 490 5300 Fax: +34 91 490 5301
<b>Middle East</b> Tel: +971 4 3916721 Fax: +971 4 3915288	<b>South Africa</b> Tel: +27 82 559 8688 Fax: +27 11 784 6916	<b>Asia-Pacific</b> Tel: +852 2508 9780 Fax: +852 2508 9232	<b>South Pacific</b> Tel: +61 2 9023 9500 Fax: +61 2 9023 9501

THIS DOCUMENT IS PROVIDED TO YOU FOR INFORMATIONAL PURPOSES ONLY. The information furnished in this document, believed by Mitel to be accurate as of the date of its publication, is subject to change without notice. Mitel assumes no responsibility for any errors or omissions in this document and shall have no obligation to you as a result of having made this document available to you or based upon the information it contains.

M MITEL (design) is a registered trademark of Mitel Networks Corporation. All other products and services are the registered trademarks of their respective holders.

© Copyright 2006, Mitel Networks Corporation. All Rights Reserved.

GD 10712 PN 51010176RA-EN