

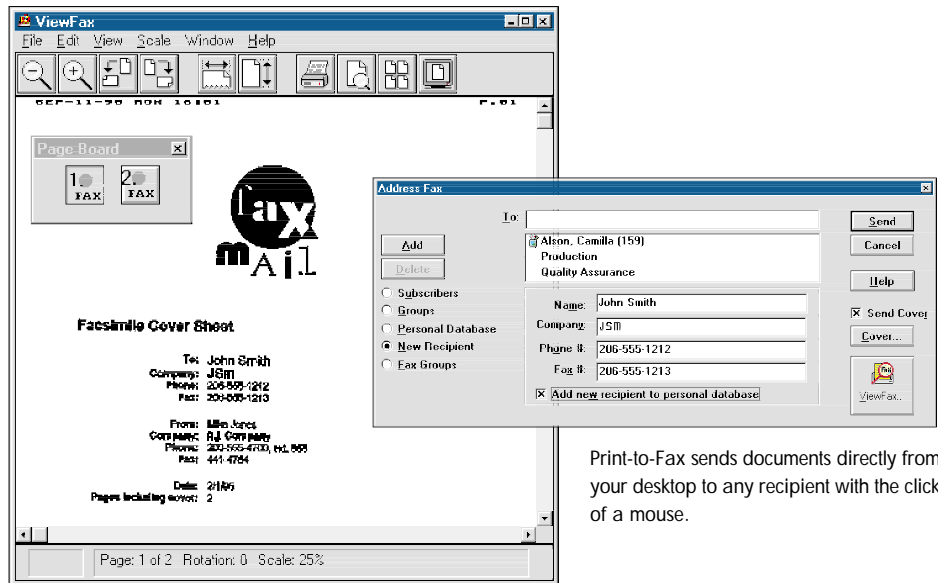
TELANOPHY

Active Voice is a world leader in developing PC-based unified messaging systems and computer telephony software solutions. The Seattle-based company has been in business since 1983, and has offices in Australia, Canada, China, France, Sweden, The Netherlands, and the United Kingdom. With more than 85,000 systems installed in virtually every kind of business in over 60 countries, Active Voice develops technology that helps businesses communicate better—with people in the same office, across town, in the next time zone, on the other side of the planet. Active Voice's sophisticated, friendly technology makes everyone more productive and efficient.

ACTIVE VOICE

## ViewFax®

for REPARTEE® CTI



Print-to-Fax sends documents directly from your desktop to any recipient with the click of a mouse.

ViewFax manages all incoming faxes on screen, so you can preview, print, and redirect them.

ViewFax for Repartee CTI eliminates fax gridlock and streamlines the faxing process by working with ViewMail® or ViewMail for Microsoft Messaging, to provide complete visual management of your faxes from a networked PC. As part of Active Voice's suite of TeLANophy unified messaging modules for Repartee CTI, ViewFax's intuitively designed computer interface makes administration of all your faxes easier and more convenient, helping you work more efficiently and improve customer service.

### Desktop Faxing

ViewFax allows you to intelligently manage incoming faxes right from your desktop PC. By sending faxes directly to your ViewMail or ViewMail for Microsoft Messaging inbox instead of a fax machine, ViewFax gives you complete control over all documents, so you can receive and send faxes—even when fax machines are unavailable.

On-screen access to your faxes saves time and improves fax handling. Hard copies are never misplaced or removed from the fax machine without you knowing, and

with a click of your mouse you can respond to urgent messages instantly by return fax, voice, or e-mail without leaving your desk.

Plus, you can also redirect documents to other subscribers and groups, delete faxes without printing them, and track your fax activities from your computer.

### Streamline Communication

ViewFax also saves you time and money by streamlining your faxing process, reducing hardware, administration, and support costs. Outbound documents are automatically added to the fax queue, so there is no need to wait for fax machines that are busy sending or receiving documents. And if you receive a fax and wish to distribute it to a group of colleagues in your office, there is no need to print the fax, make multiple photocopies, and then manually place them in everybody's mailboxes. With a few mouse clicks, ViewFax distributes the information for you while you stay comfortably at your desk.

The ability to send faxes directly from your computer increases your efficiency. ViewFax

reduces the number of steps necessary to send each fax; it simplifies communications, and speeds up delivery. Not only does ViewFax use your Repartee CTI address book, but it also integrates with many popular PIMs. With a simple click of a mouse you can send documents directly from your computer to any other ViewFax user, group of users, or personal database contact.

## Integrated Fax Capabilities

ViewFax increases your productivity by enhancing your ability to work with and manipulate information that arrives in a fax. Easy-to-use tools let you adjust documents quickly on screen. You can enlarge, reduce, rotate, and flip the image, or skip to any section using the page board. You can even cut and paste portions of the fax into other documents.

ViewFax's Fax Library Express allows you to manage your entire fax-on-demand library from any networked PC, and it sends multiple documents to any fax number instantly. With Fax Library Express and ViewFax's integration with databases, support staff can add customers to a database and send them documents while they're still on the telephone.

ViewFax works with other Active Voice TelANophy software to provide a complete unified messaging solution. With the ActiveFax™ module, you will be notified via telephone when new faxes arrive. The ViewMail and ViewMail for Microsoft Messaging modules show you the status of inbound and outbound faxes, while the E-Mail Integration package notifies you of faxes via e-mail. So no matter how you access your universal mailbox, you will

always know when important documents are sent and received.

ViewFax combines the power of unified messaging and computer-based fax technology into one easy-to-use system that provides virtually unlimited fax capabilities.

## System Requirements

Latest version of Repartee software  
TelANophy ViewMail or ViewMail for  
Microsoft Messaging

ActiveFax

PC operating systems supported:

Windows® 3.1, 95, 98, NT, and  
Windows for Workgroups

## PIMs Supported:

Check our Web site, [www.activevoice.com/products/repartee/viewfax.asp](http://www.activevoice.com/products/repartee/viewfax.asp), for latest supported PIMs and versions.

## ViewFax Features

### ViewFax

- Copy, cut, and paste
- Fit to width or height
- Image contrast control
- Image magnification
- Image rotation
- Negative image
- Network printing

### Print-to-Fax

- Broadcast fax
- Custom covers
- Default covers
- Fax library express
- Group faxing
- Preview faxes before sending
- Support for Personal Information Managers



[www.activevoice.com](http://www.activevoice.com)

Designed for



Microsoft®  
BackOffice®

United States & Canada +1 206 441 4700 • Australia +61 (0) 3 9240 8266 • China +852 2774 2986 • France +33 (0) 1 44 25 26 38  
Sweden +46 (0) 8 5947 8110 • The Netherlands +31 (0) 36 546 1212 • United Kingdom +44 (0) 1344 360630

To order use part number 580-01445.  
899-00660 for internal use only.

© 2000 Active Voice Corporation. Specifications subject to change. Brand and product names used in this document are trademarks of their respective owners.  
Printed 01/00.

